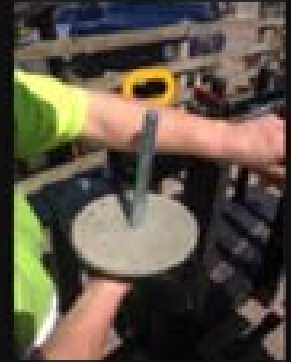


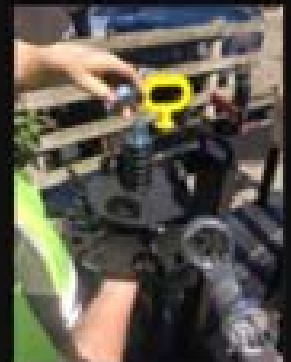
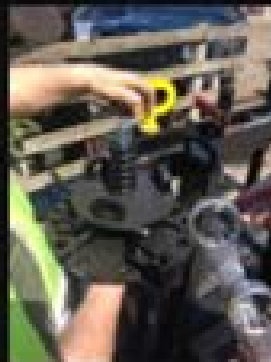
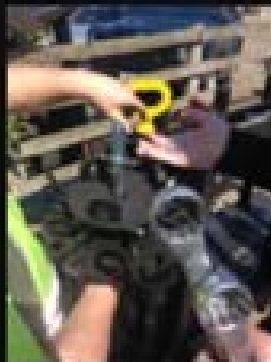
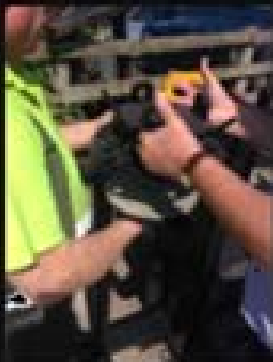
Welcome to the  
**Quickfencer 50.**

Single Barbed Wire Attachment Information

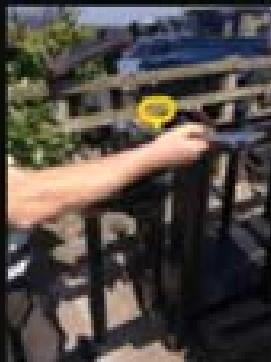
# Single Barb Assembly



**The single barb attachment plate should be bolted on using the screws supplied. Afterwards, apply the clutch plate and insert the spider support rod from underneath.**

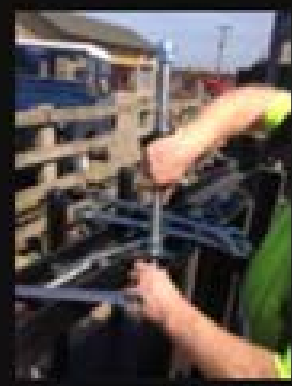
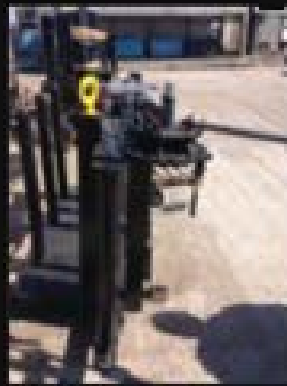


**The barb spider should be placed on top followed by a washer, then the spring, washer, and nut.**

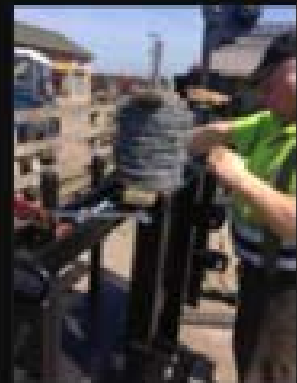


**The bolt should be tightened, then the second bolt applied and tightened further.**

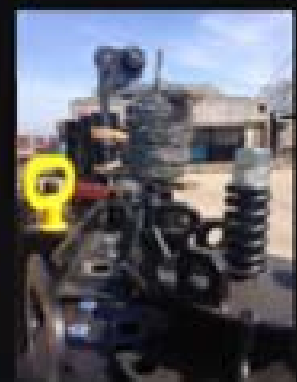
# Single Barb Assembly



**The spring bolt should now be fixed to the underside of the barb spider as shown. The barb spider should just be able to be turned by hand. Now, affix the wire support rod using the supplied nuts and washers.**



**Ensure the supplied spring and round plate are in place before applying the barbed wire reel.**



**The completed unit should run the wire from the reel, bypassing the shackle, in front of the spider to be attached. Then, pull the slack over the spider and through the shackle.**

**Please refer to the manual for further user instructions and safety cautions**